

# ROHE INTERNATIONAL, Inc.

*Presentation*



# INTRODUCTION

- Incorporated in 1991, Rohe International, Inc. is managed and operated by Engineers with many Years of Experience on High Voltage Circuit Breakers.
- Rohe International, Inc. is specialized in repair, refurbishing and/or manufacturing of High Voltage Circuit Breaker parts. Consulting, Seminars and technical Support on various Types of Circuit Breakers is also provided.
- For many years, Rohe International, Inc has been the exclusive agent for J.A.Becker Compressors for the entire USA. In addition we are the US Agent for Schniewindt and DMS products.

# MISSION AND OBJECTIVES

*To be a Supplier recognized by high Quality Standards and technical Knowledge.*

- ★ By supplying products of **QUALITY**, with the shortest possible **DELIVERY TIME** and reasonable **PRICES**.
- ★ By being in close touch with customers, employees and vendors.
- ★ By working hard to constantly improve our products and services.

**ROHE INTERNATIONAL, Inc.**

*The Products and Services illustrated in this Brochure represent only a Portion of ROHE's Capabilities.*

***Overview of our  
PRODUCTS  
and SERVICES ...***

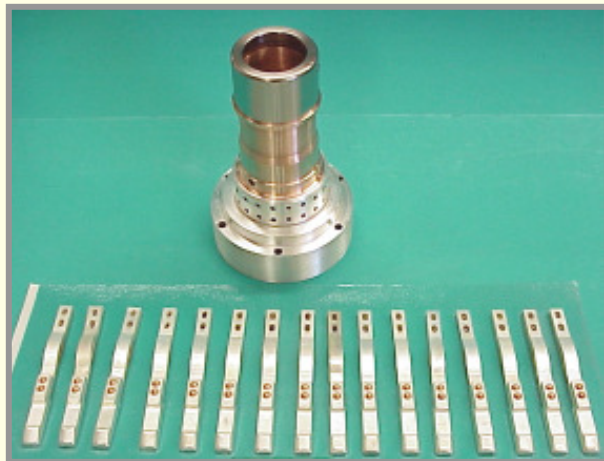
# PK BREAKER

Consulting and refurbishing

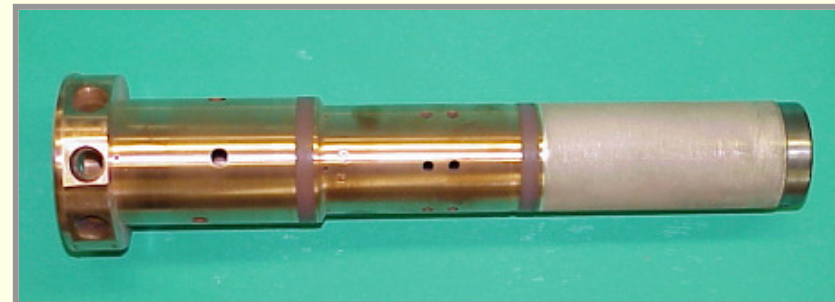
Technical training on PK Breakers for  
the personnel of North, Central and  
South American Utilities.



**Tubular Moving  
Contact**



**Contact Holder & PK Contact  
Fingers**

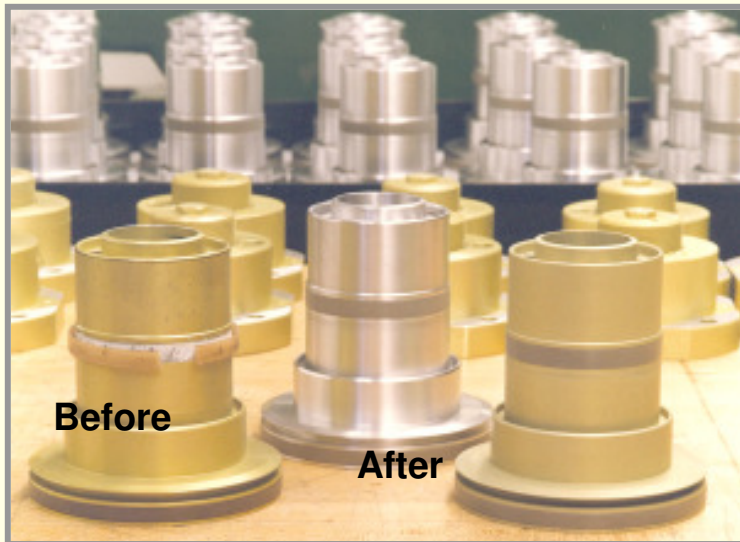


**Fixed Contact Tube**

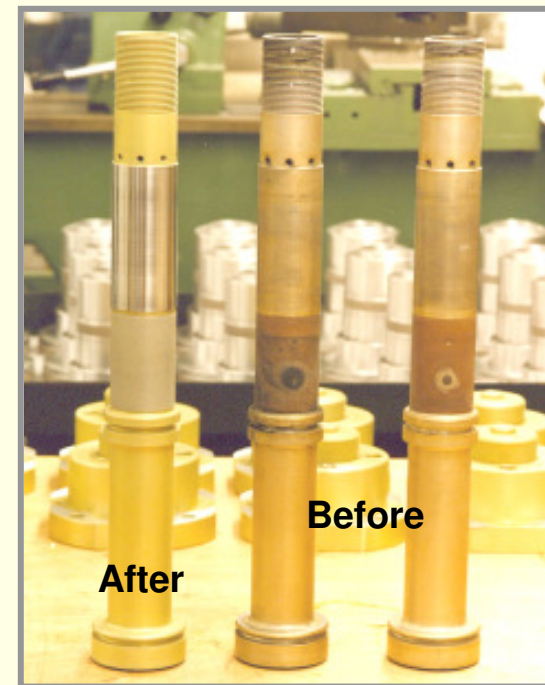
# PK BREAKER

Nylon slider refurbishing on many different Types of Parts

**Nylon refurbishing on DELLE - PK Breakers. More than 60,000 Parts up to now refurbished**



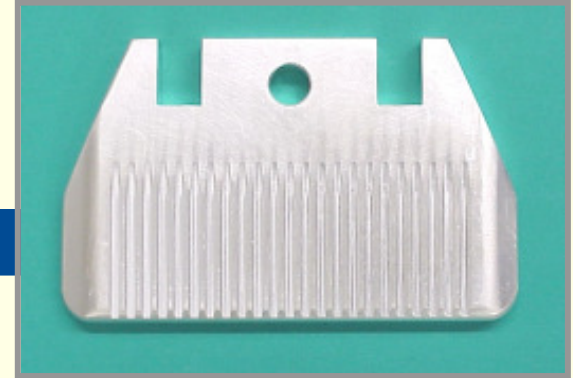
**Blast Valve Piston**



**Aux. Chamber Moving Contact Rod**

# ABB – DB Breaker

Manufacturing and / or refurbishing / training



**Contact Blade**



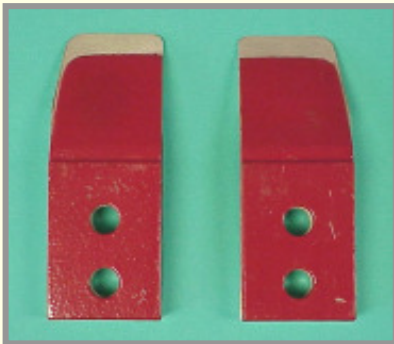
**Contact Nozzle**



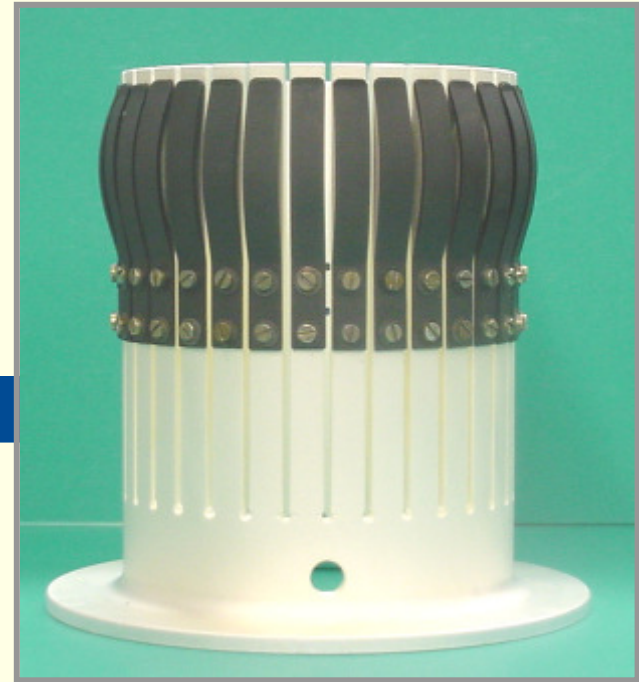
**Arcing Contact**

# ABB – DB Breaker

Manufacturing and / or refurbishing



Contact Brushes



Contact Tube

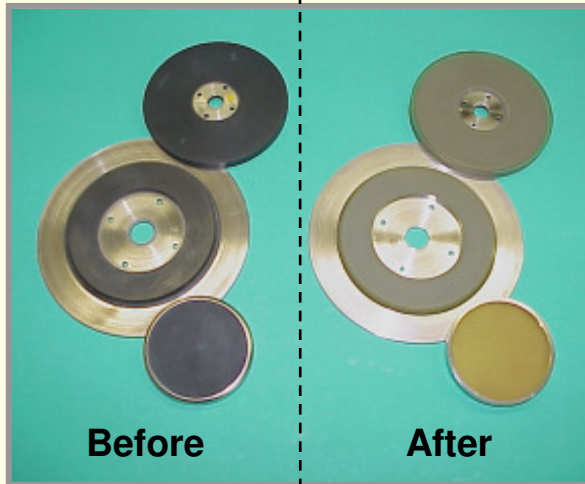
Overhaul Kit for  
DB Control  
Mechanism



**ROHE INTERNATIONAL, Inc.**

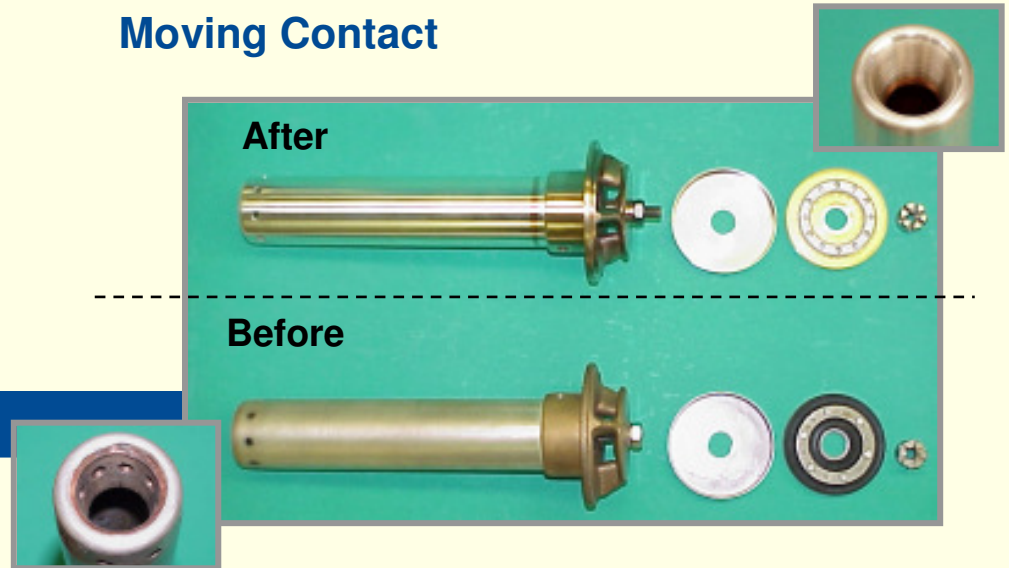
# ABB - DCVF

Refurbishing & training

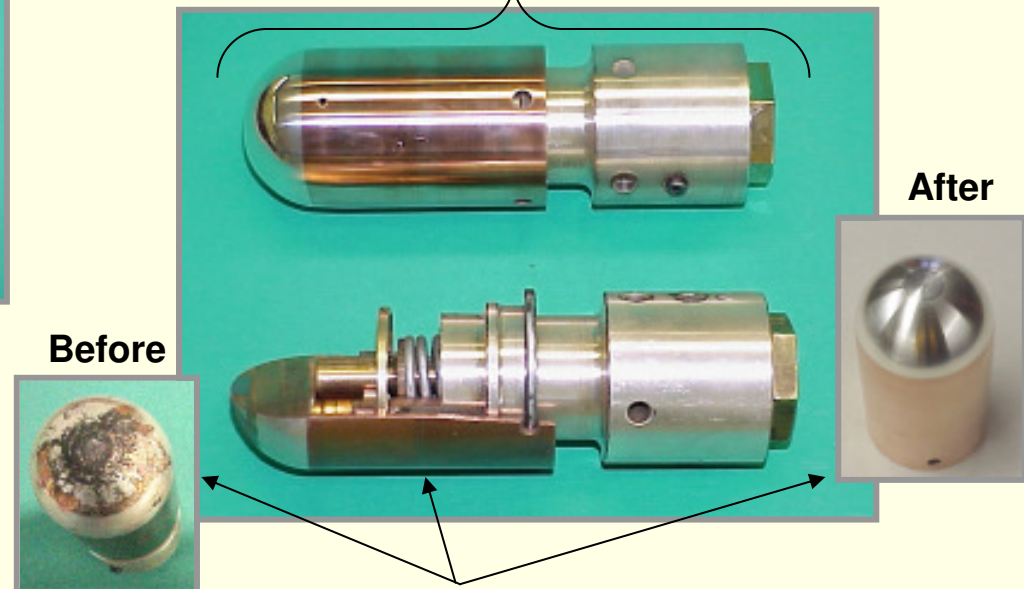


Sealing Discs

Moving Contact



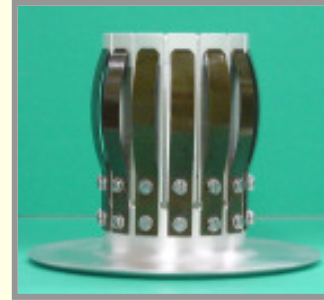
Semi-Moving Contact



Arcing Contact

# ABB - DCVF

Refurbishing & training



Contact Tube

Ventilating Cartridge

Before

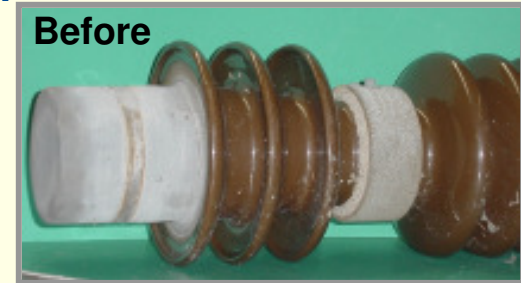


After



Dry Capacitor

Before



After



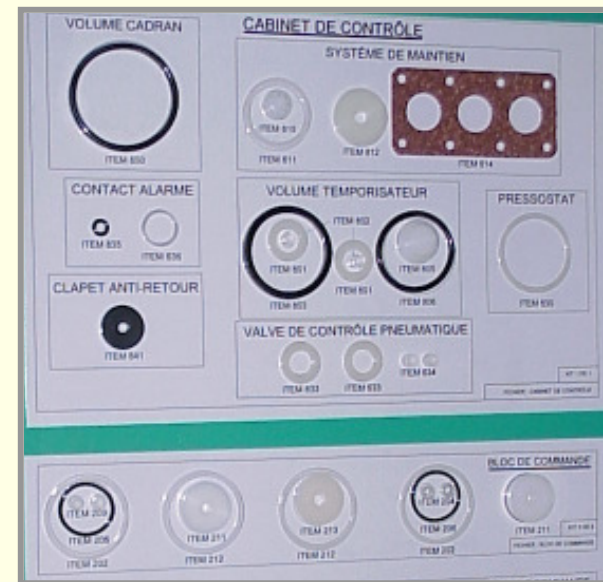
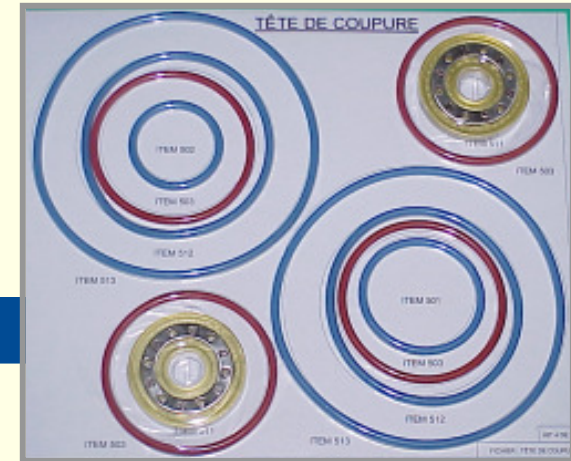
# ABB - DCVF

Replacement Spare Parts in individual Kits \*

Kit for Servo-Valve



Kit for Main-Interrupter



Kit for Control Block

Kit for Main-Valve

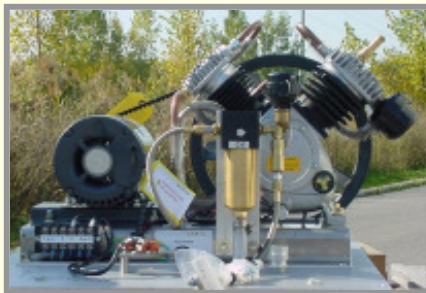
\* Laminated on demand only.

ROHE INTERNATIONAL, Inc.

# ABB - ELF

Refurbishing, supplying Parts & training

**Replacement Compressor  
Assembly with housing**



**HAUG  
↔ Replacement  
Compressor**

**Pilot Valve Type Lucifer**



**Blocking Device**



**PKA Pneumatic Mechanism Spare  
Parts and Service**



**ROHE INTERNATIONAL, Inc.**

# ABB - ELF

PKA Mechanism new Parts.



**Damping  
Piston**



**Follower Rod**

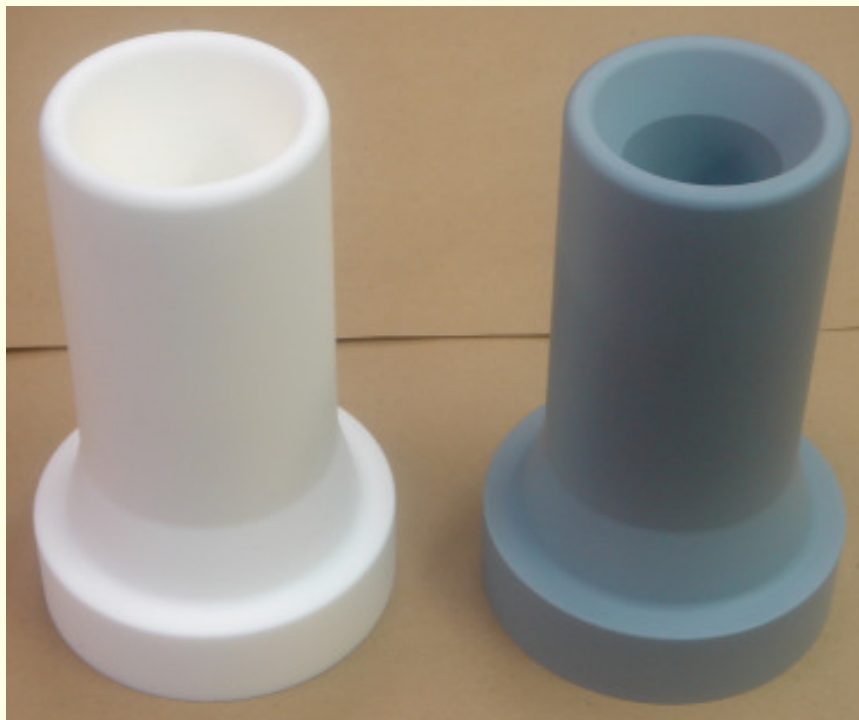


**Control Piston**

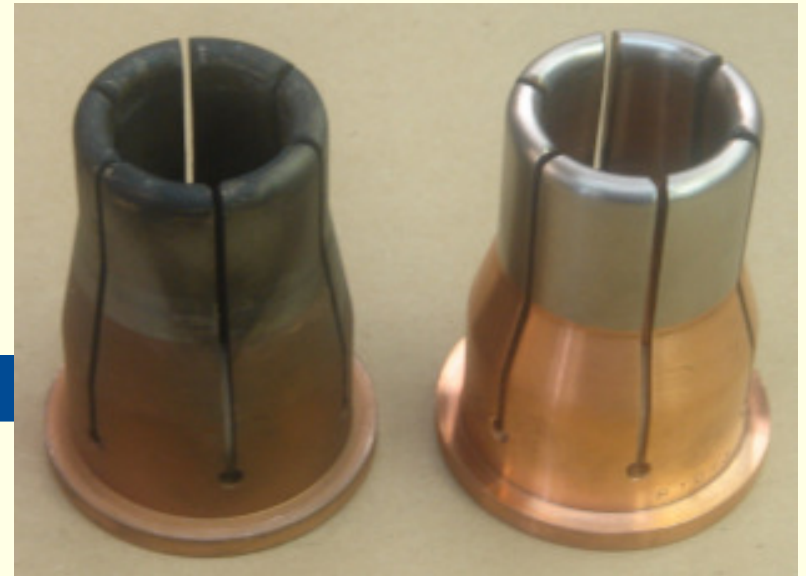
**ROHE INTERNATIONAL, Inc.**

# ABB – ELF & PA

Interrupter new Parts.



**Main Nozzle**



**Arcing Contact**



**Aux. Nozzle**

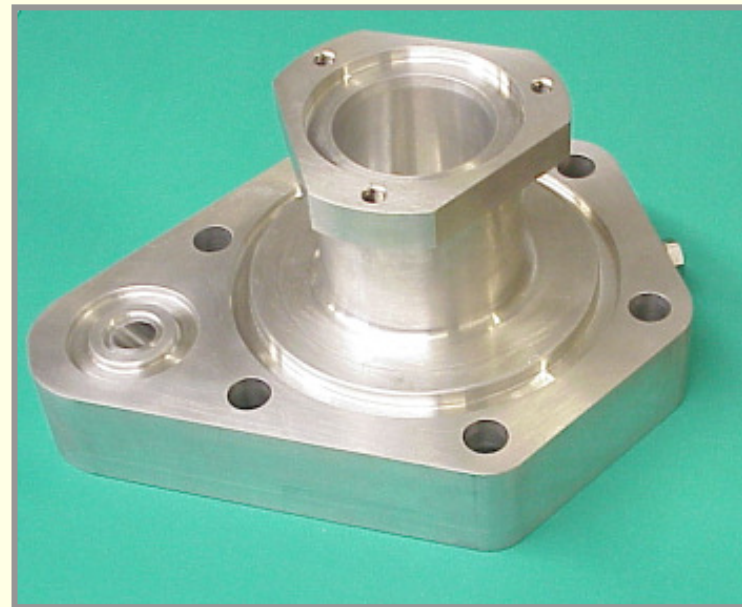
# ABB – DLVF(K)

New or refurbished Parts and Technical Support

Refurbished Gasket  
for DL(V)F-K with  
H.P. Injection Valve



Refurbished & redesigned  
Piston for DL(V)F-K with H.P.  
Injection Valve



Flange for DL(V)F

**ROHE INTERNATIONAL, Inc.**

# ABB - DLF

Replacement Spare Parts & training

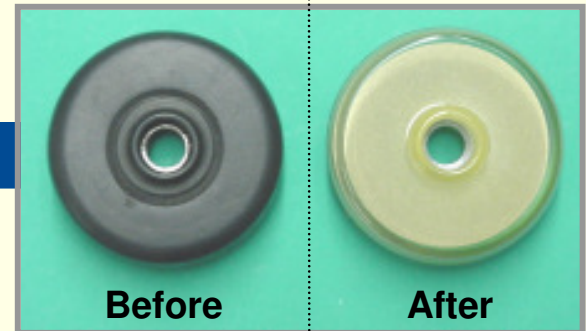


New designed, stronger  
Ventilating Piston

Contact Strips Type MC



Position  
Indicator



Gasket for DLF with  
Mechanical Control Block

Moving contact DLF



Before



After



Before



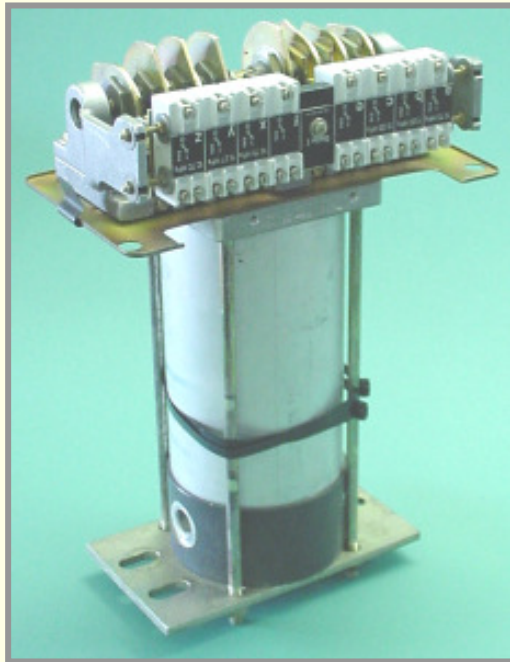
After

Fixed contact DLF

**ROHE INTERNATIONAL, Inc.**

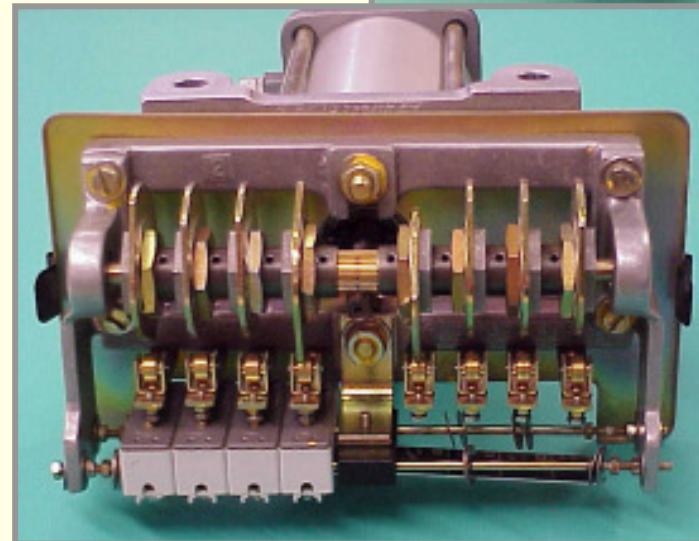
# ABB – AIR BLAST CB's

New or refurbished Parts and Technical Support



**Multi-Pole Pressure  
Switch 63H**

**Multi-Pole Pressure  
Switch 63 L**

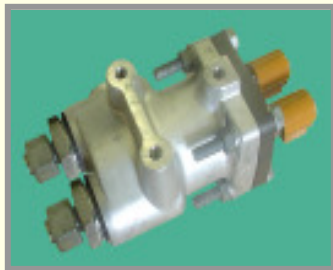


**ROHE INTERNATIONAL, Inc.**

# ABB – AIR BLAST CB's

Refurbished Parts and Technical Support

**Solenoid Valve Type SV200**



*Original Version*



*Our Improved Version*



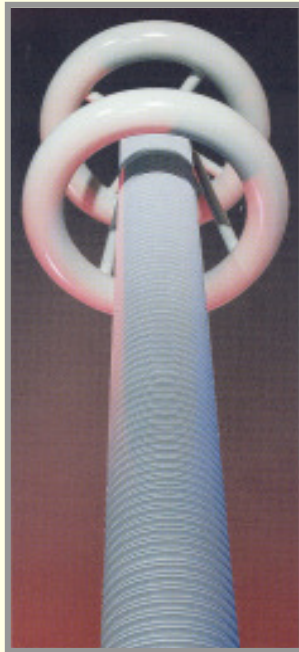
**Refurbished E3 Valve  
DL(V)F-K**

**ROHE INTERNATIONAL, Inc.**

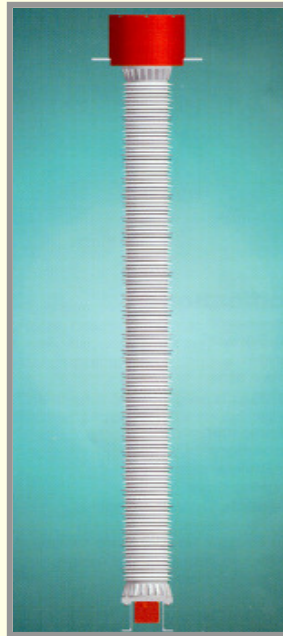
**SOLE SUPPLIER FOR SCHNIEWINDT  
PRODUCTS IN USA**

# **SCHNIEWINDT PRODUCTS**

**Exclusive Agent (Sales)**



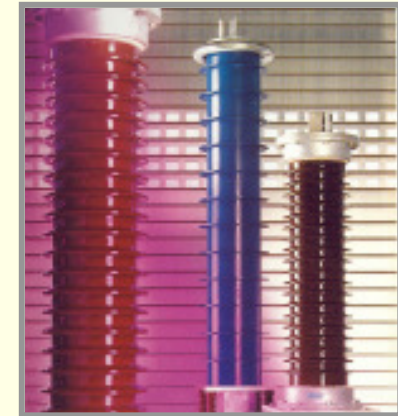
**Voltage Divider for  
outdoor Operations  
550kV DC with  
Composite Insulator**



**CT/VT Hybrid**



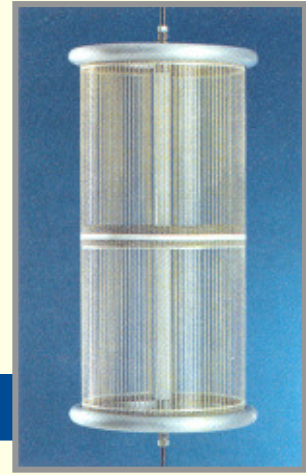
**Indoor Voltage  
Divider with Epoxy  
Cast Resistor 150  
kV DC**



**Voltage Divider for  
outdoor and indoor  
Operations 120kV DC**

# SCHNIEWINDT PRODUCTS

Exclusive Agent (Sales)



Indoor Filter Resistor for smaller Loads, also used as Damping Resistor in Electrostatic Dust Filters



Dummy Load Resistor for Radio Transmitter  
500kW 530 to 1600 Hz



Filter Resistor for Pacific HVDC Inter-Tie, USA; Single-Phase 57  $\Omega$ , 30 kW BIL 450 kV across Resistor, 500 kW  
Inductivity < 20  $\mu$ H  
Seismic Withstand 0.5 g  
Resistors of this type are in operation up to 800 kW, LIWL up to 650 kV.



Indoor Filter Resistors, Single Phase, for Static Var Compensator 4000  $\Omega$ , 25 kW BIL 250 kV across Resistor and to Ground.

**ROHE INTERNATIONAL, Inc.**

# ETNA PRODUCTS

Training, refurbishing & Spare Parts Supply

**ETNA Products : Pressure Switches,  
Make Switches, Safety Valves,  
Accumulators, ...**



# RELIEF VALVES

Repair & Sales

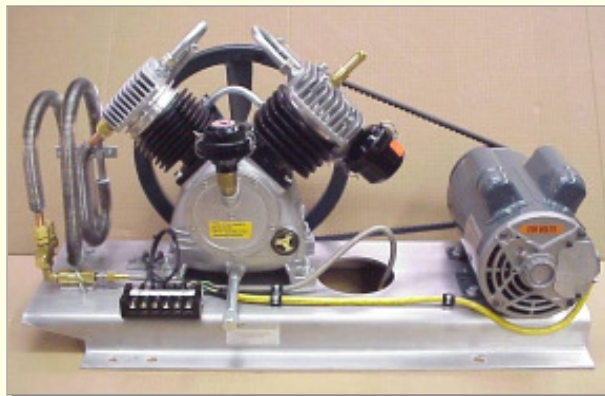


**ROHE INTERNATIONAL, Inc.**

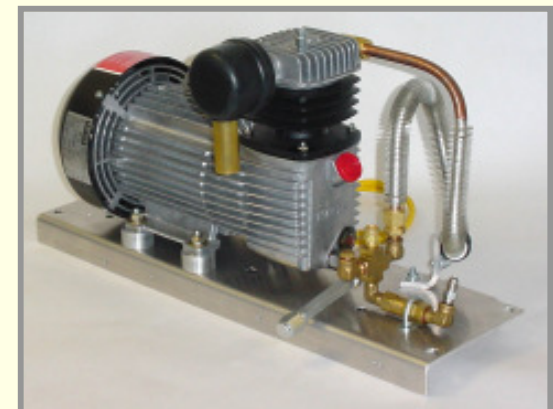
# Replacement Compressor Assemblies for Oil Circuit Breakers

Manufacturing, Sales & Service

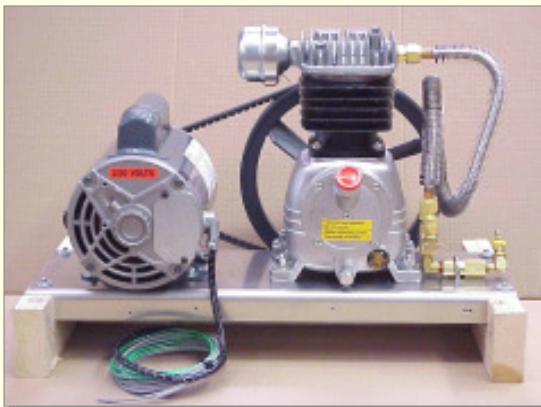
**Compressor  
Assembly  
Type K175-GE for  
MA18 & MA19  
MECH'S ⇨**



**Air Compressor K160 for  
special application,  
Single Stages 290 psi. max.**



**Compressor Assembly  
K150 for GE AT's  
with  
MA-13 MECH'S**

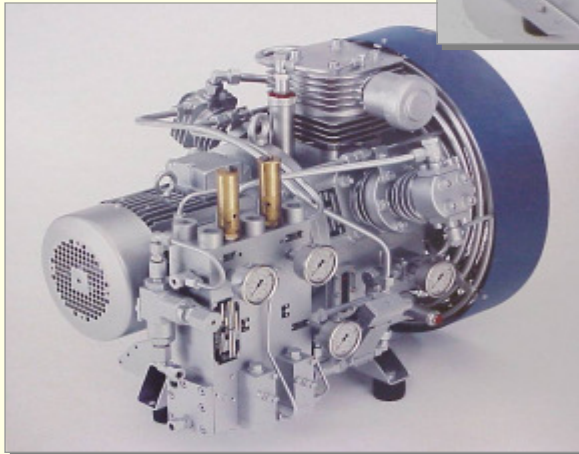


**ROHE INTERNATIONAL, Inc.**

# Compressors for Air Blast Circuit Breakers and Nitrogen Production

General Agent USA - Sales, Spares, Repair & Service

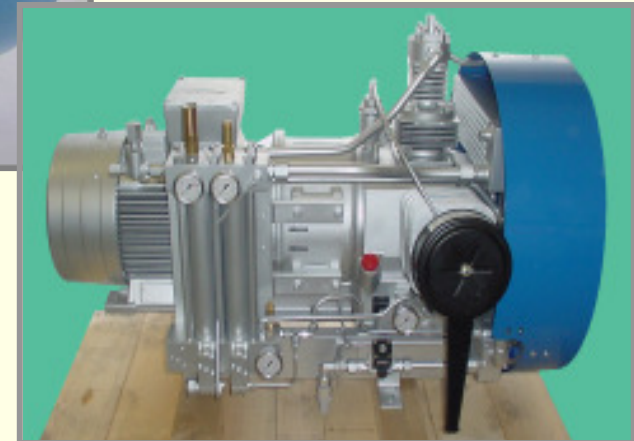
**Air Compressor  
JAB SV1100/250  
(BECKER)**



**Air Compressor  
JAB SV225/250  
(BECKER)**

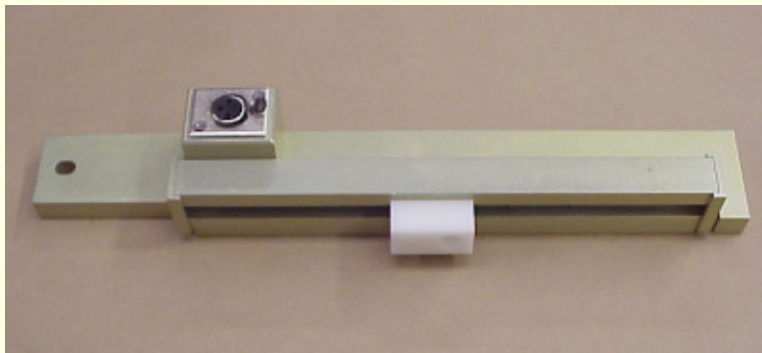


**Air Compressor  
JAB SV1101/120  
(BECKER)**

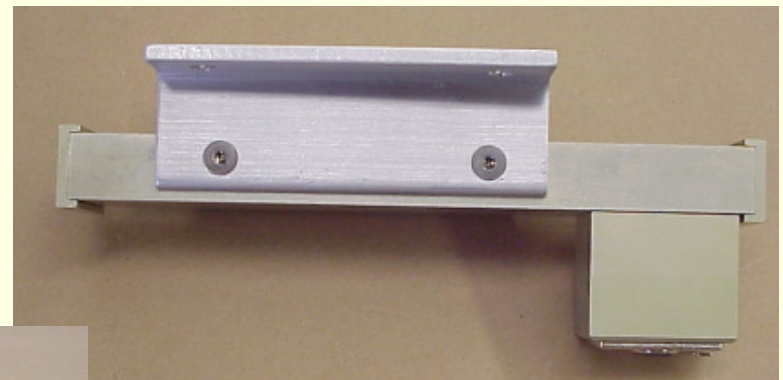


**ROHE INTERNATIONAL, Inc.**

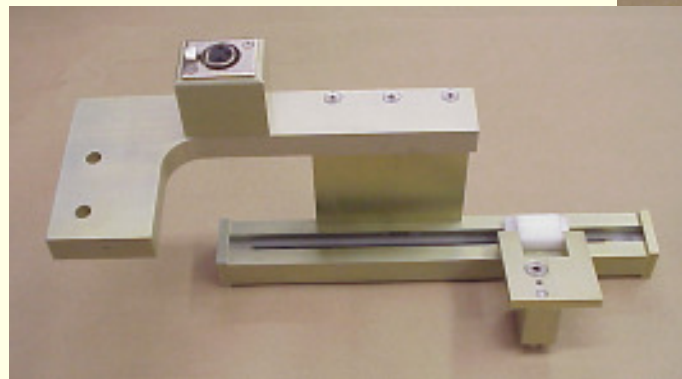
# Transducers for velocity checks



Transducer for PKA Mechanism



Transducer for Areva  
DT-2 550 kV CB.



Transducer for AHMA Mechanism

**ROHE INTERNATIONAL, Inc.**

# CASRAM PRODUCTS

General Agent USA - Arcing Contacts



**O.E.M. & Specials**

**ROHE INTERNATIONAL, Inc.**

## **ROHE** INTERNATIONAL, Inc.

### **HOW TO REACH US :**

**349 Northgate Drive  
Warrendale, Pa 15086  
Phone : (724) 933-0260  
Fax : (724) 933-0266  
E-Mail : [roheinc@consolidated.net](mailto:roheinc@consolidated.net)  
[www.roheinc.com](http://www.roheinc.com)**

**Our local agent is:**