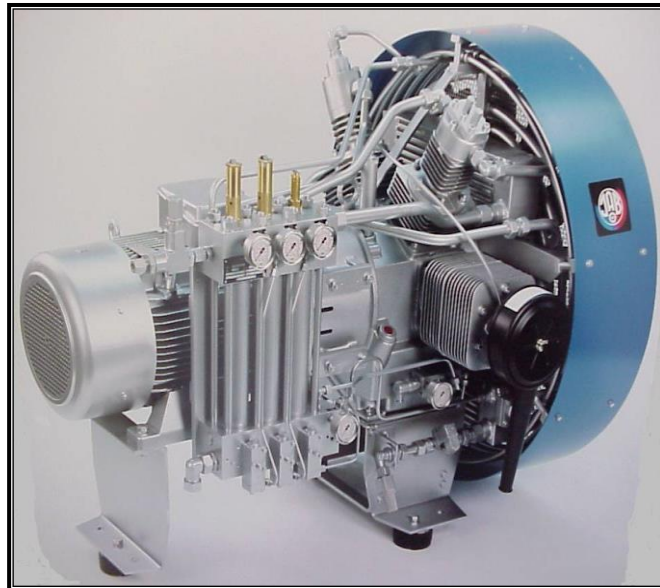
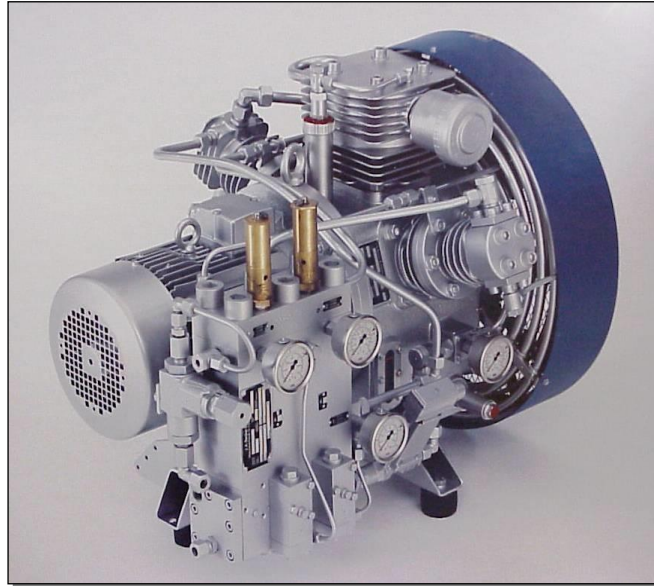


# **ROHE INTERNATIONAL, INC.**

## **AIR COMPRESSORS FOR H.V. CIRCUIT BREAKERS**



### **ROHE INTERNATIONAL, INC.**

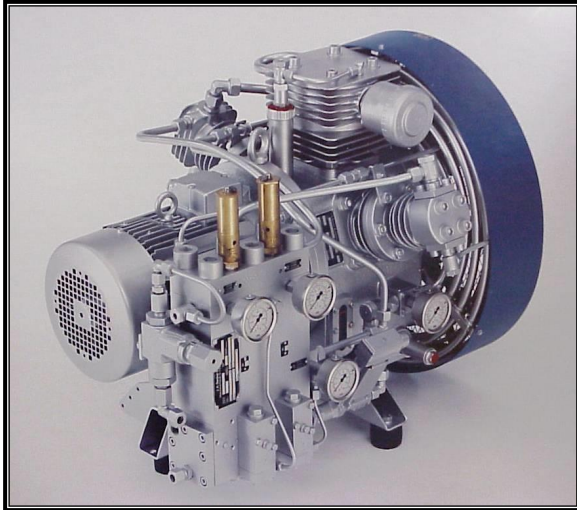
349 NORTHGATE DRIVE; WARRENDALE, PA 15086

PHONE: (724) 933-0260; FAX: (724) 933-0266

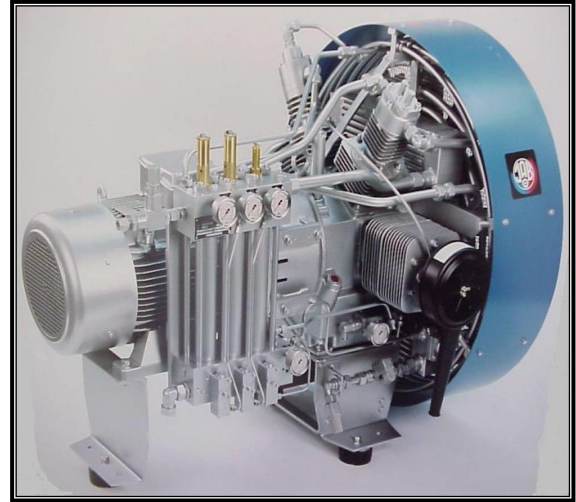
**E-mail: [roheinc@consolidated.net](mailto:roheinc@consolidated.net)**

**[www.roheinc.com](http://www.roheinc.com)**

# REPLACEMENT AIR COMPRESSORS FOR AIR BLAST CIRCUIT BREAKERS



**ROHE JAB SV225/250-350**

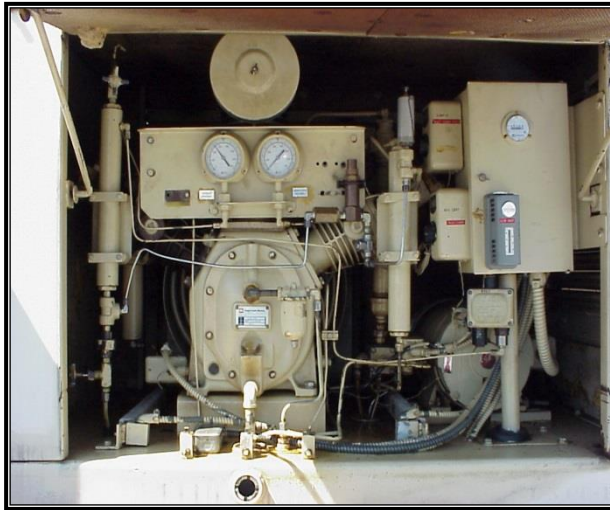


**ROHE JAB SV1100/250-350**

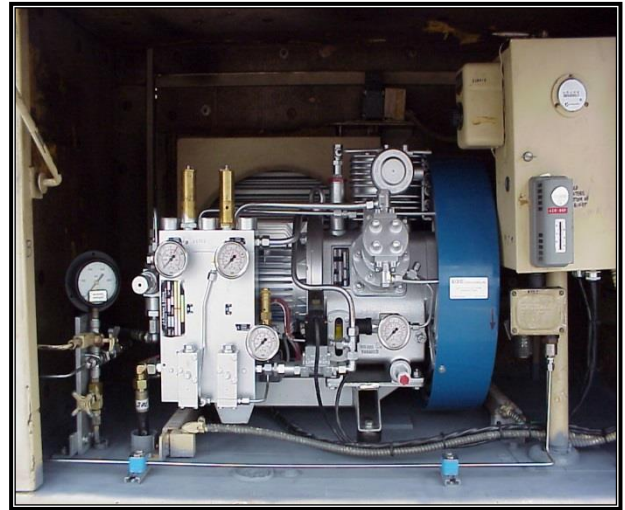
| <b>ROHE JAB SV225/250-350<br/>Compressor Specifications</b> |            | <b>ROHE JAB SV1100/250-350<br/>Compressor Specifications</b> |            |
|---|------------|--|------------|
| Cylinders   | 3          | Cylinders  | 4          |
| Stages  | 3          | Stages   | 4          |
| Max. Pressure   | 5075 PSI   | Max. Pressure  | 5075 PSI   |
| Free Air Delivery   | 9.2 SCFM   | Free Air Delivery  | 43.5 SCFM  |
| Operating Speed   | 1725 RPM   | Operating Speed  | 1725 RPM   |
| Oil Capacity  | 4.0 quarts | Oil Capacity   | 16 quarts  |
| Length  | 30 in.     | Length   | 57 in.     |
| Width   | 25 in.     | Width  | 41 in.     |
| Height  | 24 in.     | Height   | 53 in.     |
| Weight  | 370 lbs.   | Weight   | 1,325 lbs. |

The SV225/250 Air Compressor has the following specifications: 3 Cylinder, 3 Stage, 9.2 SCFM, available up to 5000 PSIG, 1725 RPM, 10 HP. Includes: Condensate Separators for second and third pressure stage, Unloader, Unloader Timer, Oil Pressure Switch, Heaters with Thermostats. Weight 370 lbs., Length 30 in., Height 24 in., Width 25 in.

# REPLACEMENT AIR COMPRESSORS FOR AIR BLAST CIRCUIT BREAKERS



**Original Ingersoll-Rand**



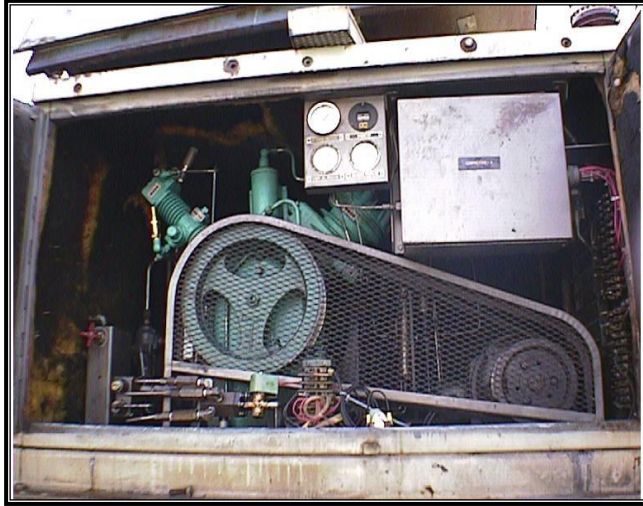
**ROHE JAB SV225/250 Retrofit**

The SV225/250 retrofit is a cost effective solution to the problems associated with aging compressors on air blast circuit breakers. The above photos were taken at a substation and show an actual before and after. The main characteristics of our air-cooled high pressure model are reliability and longevity. The construction of the compressor, including a high volumetric efficiency and the arrangement of the cylinders directly within the flow of the cooling air, enables you to operate with lower temperatures of compression leading to a long service life of the valves.

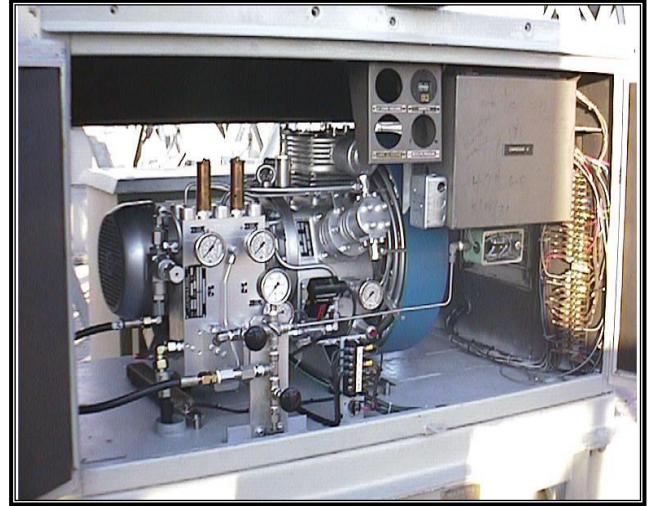
The SV225/250 Air Compressor has the following specifications: 3 Cylinder, 3 Stage, 9 SCFM, available up to 5000 PSIG, 1725 RPM, 10 HP. Includes: Safety Valves and Pressure Gauges for each individual Stage, Unloader, Unloader Timer, Oil Pressure Switch and Gauge, Heaters with Thermostats. Weight 370 lbs., Length 30 in., Height 24 in., Width 25 in.

The advantages of the SV225/250 Retrofit: All new Components, Direct drive, Oil Pressure Lubrication, Large Fan and After Coolers maintain less than 10 degrees C temperature rise.

# REPLACEMENT AIR COMPRESSORS FOR PK/PKG/DLF AIR BLAST CIRCUIT BREAKERS



**Original Worthington**



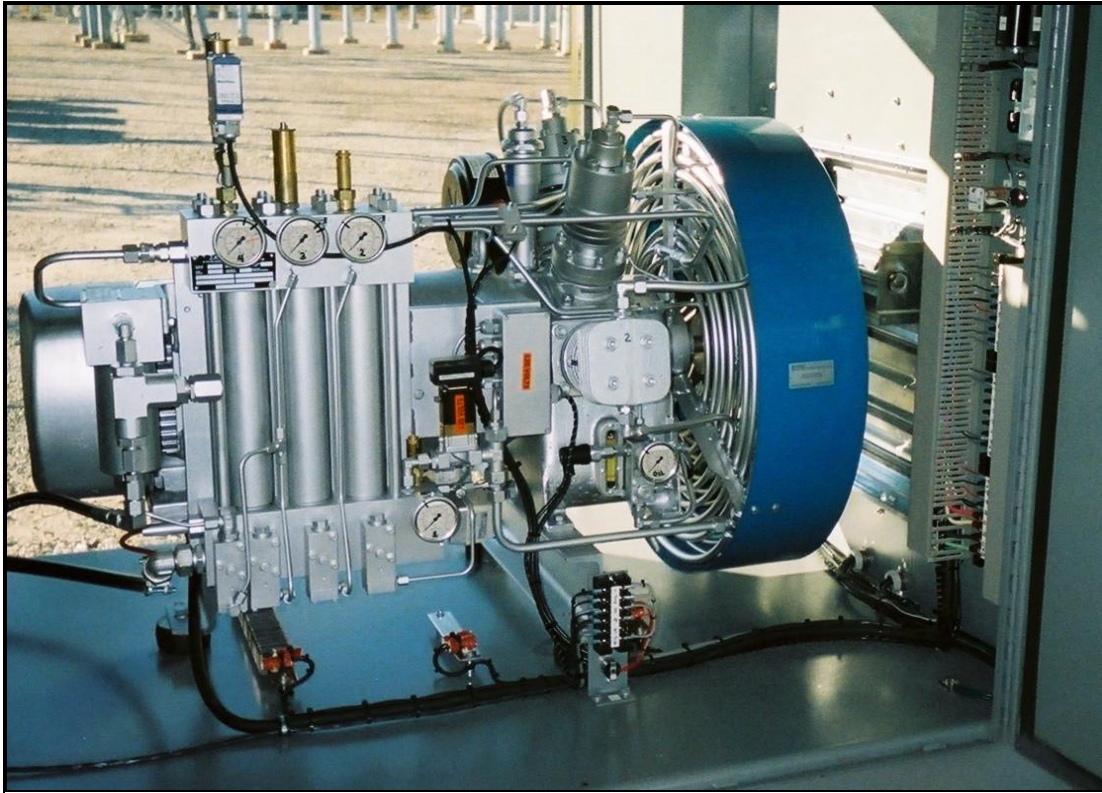
**ROHE JAB SV225/250 Retrofit**

The SV225/250 retrofit is a cost effective solution to the problems associated with aging compressors on air blast circuit breakers. The above photos were taken at a substation and show an actual before and after. The main characteristics of our air-cooled high pressure model are reliability and longevity. The construction of the compressor, including a high volumetric efficiency and the arrangement of the cylinders directly within the flow of the cooling air, enables you to operate with lower temperatures of compression leading to a long service life of the valves.

The SV225/250 Air Compressor has the following specifications: 3 Cylinder, 3 Stage, 9 SCFM, available up to 5000 PSIG, 1725 RPM, 10 HP. Includes: Safety Valves and Pressure Gauges for each individual Stage, Unloader, Unloader Timer, Oil Pressure Switch and Gauge, Heaters with Thermostats. Weight 370 lbs., Length 30 in., Height 24 in., Width 25 in.

The advantages of the SV225/250 Retrofit: All new Components, Direct drive, Oil Pressure Lubrication, Large Fan and After Coolers maintain less than 10 degrees C temperature rise.

# REPLACEMENT AIR COMPRESSORS FOR PK/PKG/DLF AIR BLAST CIRCUIT BREAKERS INSTALLED INSIDE A NEW ROHE CABINET



## ROHE JAB SV450/250-350 Compressor Specifications

|                         |           |
|-------------------------|-----------|
| Cylinders               | 4         |
| Stages                  | 4         |
| Max. Pressure available | 5075 PSI  |
| Free Air Delivery       | 18.5 SCFM |
| Operating Speed         | 1725 RPM  |
| Oil Capacity            | 10 quarts |
| Length                  | 46 in.    |
| Width                   | 29 in.    |
| Height                  | 33 in.    |
| Weight                  | 650 lbs.  |

# HIGH PRESSURE BREATHING AIR COMPRESSOR TRAILER



## Model: K-175-TRAILER

Transport air compressor to any site via trailer.

| <b>ROHE JAB SV225/250-350<br/>Compressor Specifications</b> |                   |
|---|-------------------|
| Cylinders   | 3                 |
| Stages  | 3                 |
| Max. Pressure   | 5075 PSI          |
| Free Air Delivery   | 9.2 SCFM          |
| Operating Speed   | 1725 RPM          |
| Oil Capacity  | 4.0 quarts        |
| Length  | 30 in.            |
| Width   | 25 in.            |
| Height  | 24 in.            |
| Weight  | 370 lbs.          |
| <b>Trailer Specifications</b>                               |                   |
| Trailer size  | 7' w x 14'l x 7'h |
| GVWR  | 7000 lbs          |
| Empty Weight  | 2300 lbs          |