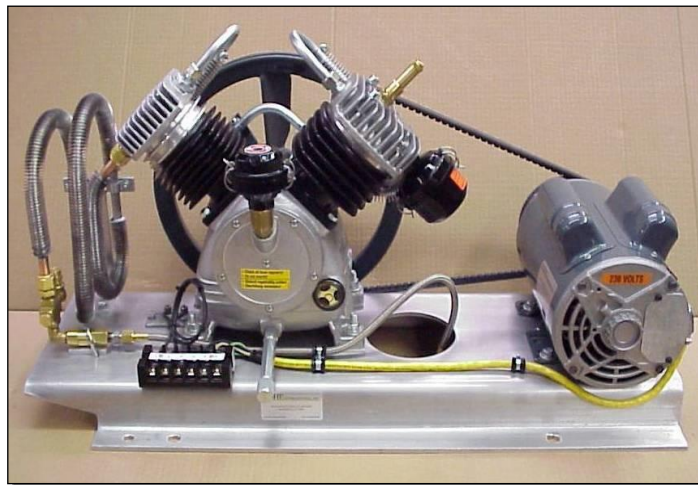
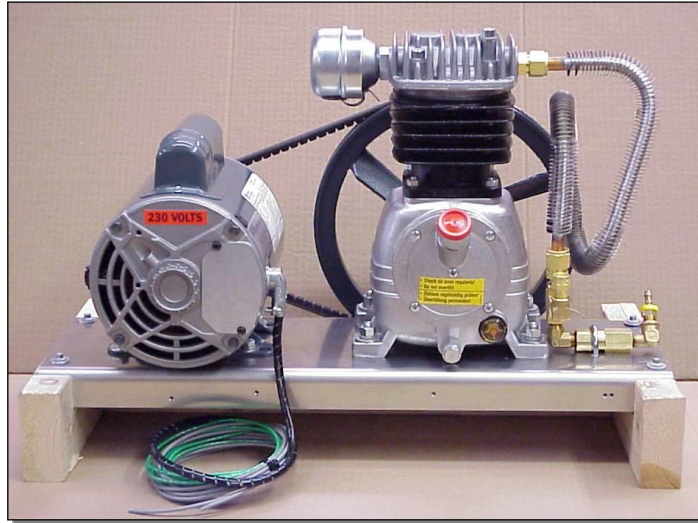


ROHE INTERNATIONAL, INC.

REPLACEMENT AIR COMPRESSORS FOR CIRCUIT BREAKERS



ROHE INTERNATIONAL, INC.

349 NORTHGATE DRIVE; WARRENDALE, PA 15086

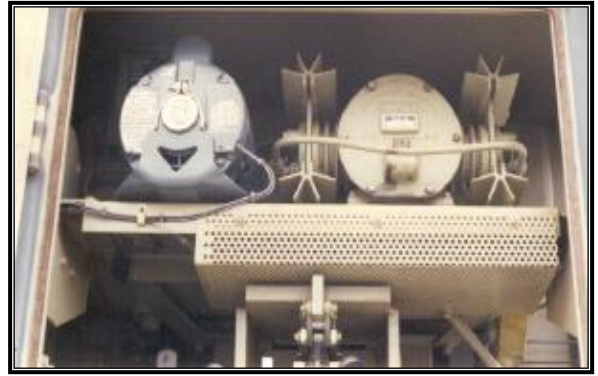
PHONE: (724) 933-0260; FAX: (724) 933-0266

E-mail: roheinc@consolidated.net

www.roheinc.com

WHY REBUILD?

Keystone, Westinghouse Air-Brake, Kellogg American and other makes of air compressors are obsolete and expensive to repair. Many parts are no longer available from OEM or are of questionable quality from sub-suppliers.



ROHE International, Inc. can supply modern, in production air compressors packaged for labor saving replacement. Our packages are complete with an industrial type compressor, motor, heavy gauge aluminum base plate, unloading valve, check valve, safety relief valve, v-belt, and flexible discharge line. They are set-up and tested. They are designed for simplified replacement.

SIEMENS TDO 72.5 kV CB REPLACEMENT COMPRESSOR K150-SIEMENS -SH



Cylinders	1
Stages	1
Maximum Pressure	210 PSI
Free Air delivery	2.75 SCFM
Minimum speed	620 RPM
Maximum speed	700 RPM

Motor Specifications:

Power	1 HP-1 or 3 Phase
Voltage	115/208-230 VAC
DC motors available on request	

The model shown above is installed in a Siemens TDO circuit breaker.

ROHE also supplies models for GE OCB's with MA13, thru MA16 type mechanisms. Retrofit Compressors for Westinghouse OCB's with AA6, AA7, AA10, CAS6 and CAS8 mechanisms are available. We have designed compressor models for ITE, Allis Chalmers, Mitsubishi and other pneumatically operated breakers. Larger 2 stage compressors packages can be supplied for working pressures up to 500 psi.

Contact us with your needs. We can supply the compressor to fit the job.

ROHE INTERNATIONAL, INC.
HAS REPLACEMENT AIR COMPRESSOR PACKAGES
FOR THE FOLLOWING MECHANISM TYPES:

<u>WESTINGHOUSE:</u>	REPLACED BY
AA7	K150-WES
AA10 – 175 PSI	K150-WES
CAS 6 & CAS 8	K150-WES
AA 14	K175-WES-AA14
AA10 – 60	K175-WES
AA10 – 80	K175-WES

<u>GENERAL ELECTRIC:</u>	REPLACED BY
MA 13/14/15/16 standard	K150-GE
MA 15 special & MA 16-4	K150-GE MA15
MA 13-6 A/B	K150-GE MA13-6
MA 18	K175-GE MA18
MA 19	K175-GE MA19

<u>ABB / BBC: for ELF CB's</u>	REPLACED BY
HAUG BOX 75	K175-HAUG
Quincy Compressor	K175-HAUG

<u>ITE:</u>	REPLACED BY
With mechanism type:	
P44	K175-ITE-P44
P24	K150-ITE-P24

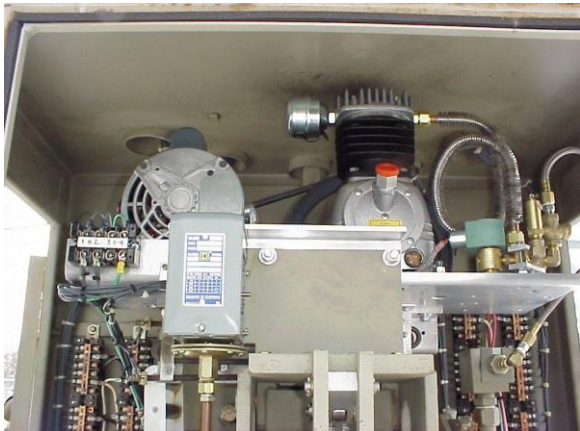
<u>OTHERS</u>	REPLACED BY
SIEMENS TDO 138 kV CB	K150-SIEMENS -SH
SIEMENS EMGLO	K150- SIEMENS-SP
Mitsubishi IWATA model CT-2282B	K150 - MIT

Other models are available upon request

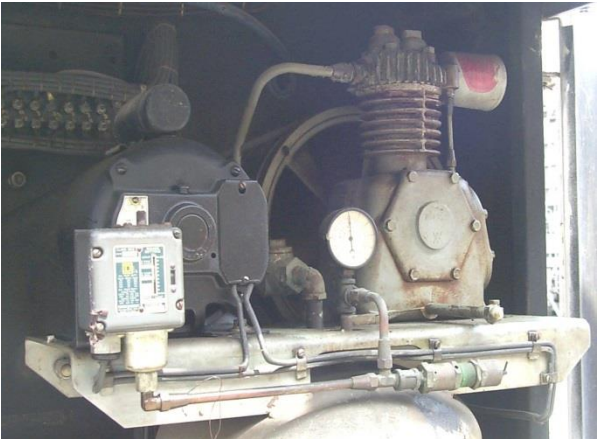
EXAMPLES OF RETROFIT COMPRESSORS



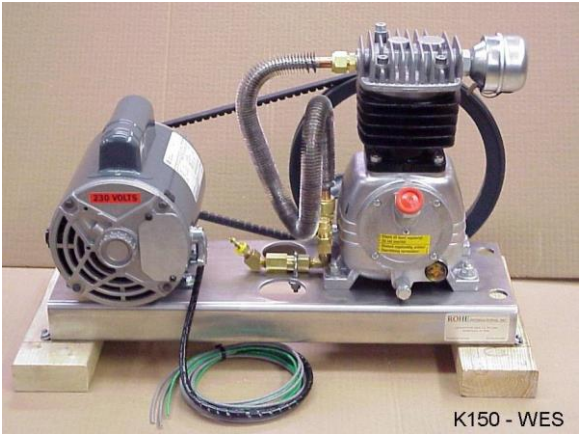
ORIGINAL GE MA13-6A/6B



REPLACEMENT GE MA13-6A/6B



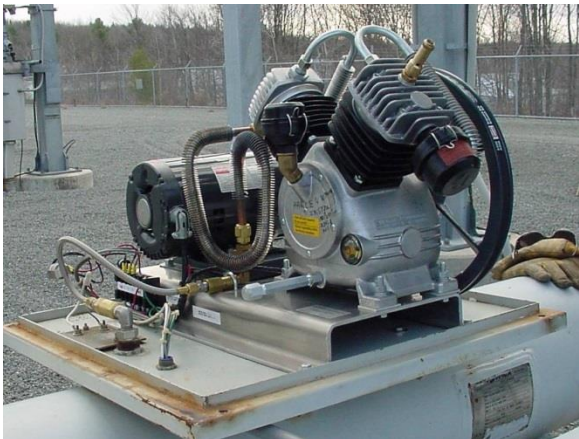
ORIGINAL CAS 8



REPLACEMENT K150-WES

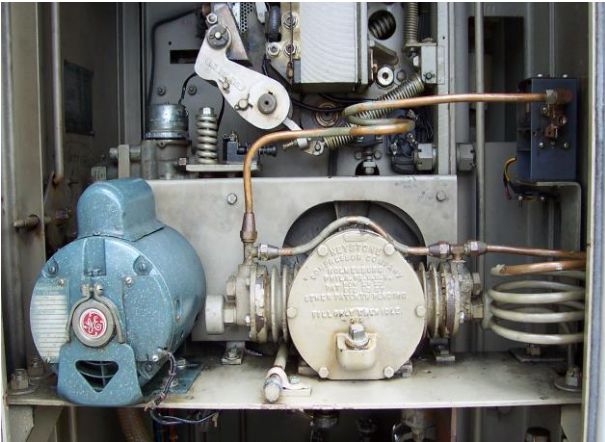


ORIGINAL HAUG BOX 75

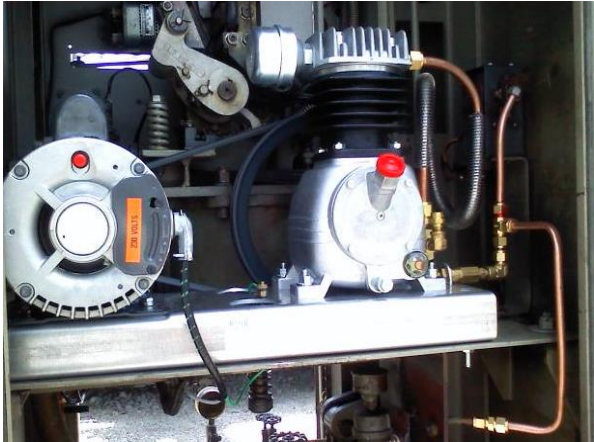


REPLACEMENT K175-HAUG

EXAMPLES OF RETROFIT COMPRESSORS



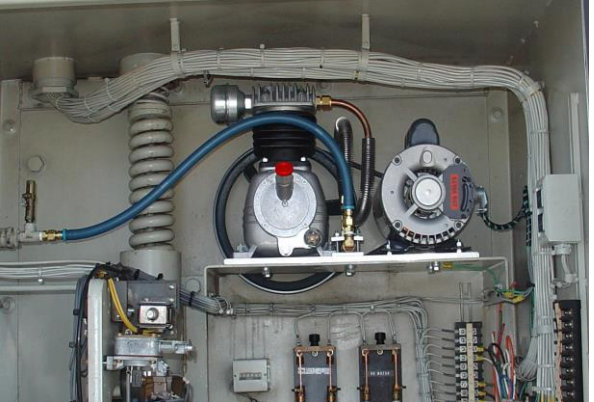
GE MA 15 SPECIAL



REPLACEMENT FOR GE MA 15 & 16-4

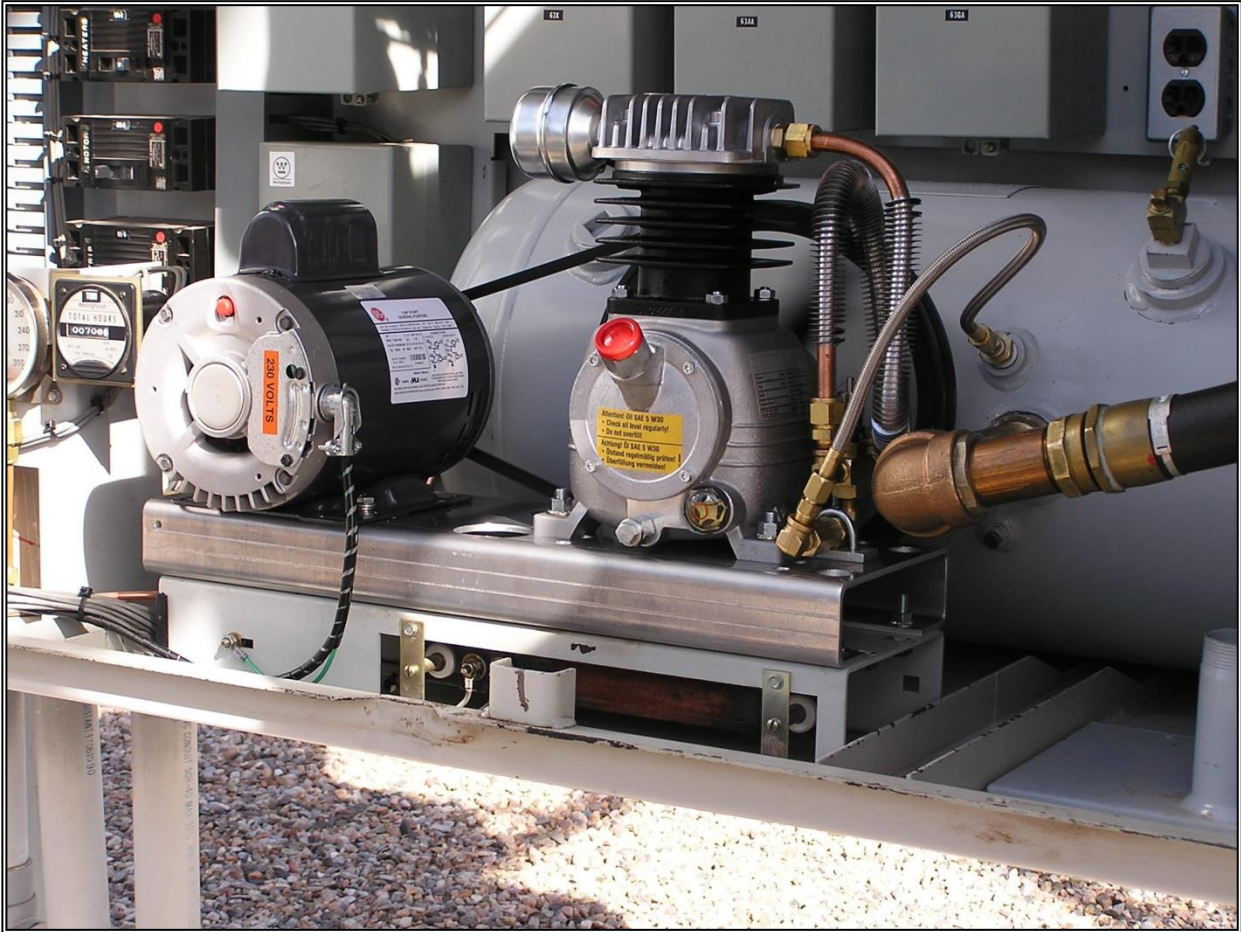


SIEMENS TDO



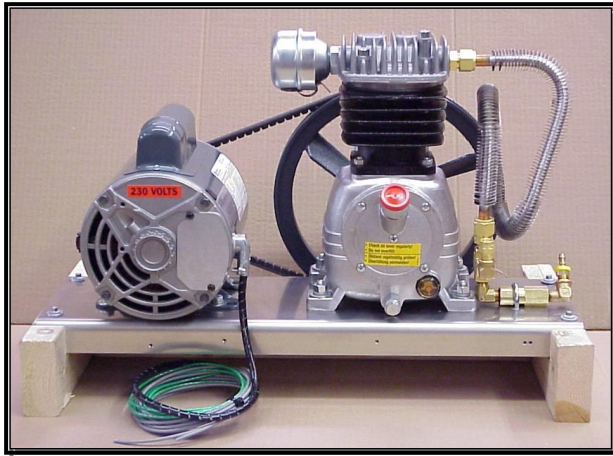
REPLACEMENT K150-SIEMENS-TDO

EXAMPLES OF RETROFIT COMPRESSORS

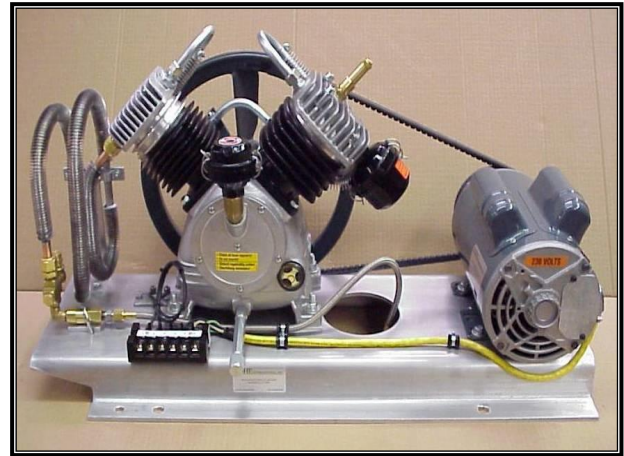


Siemens – Emglo Replacement on Type SP Breaker

DIRECT REPLACEMENT, HIGH QUALITY AIR COMPRESSOR PACKAGES FOR YOUR GE OIL CIRCUIT BREAKERS



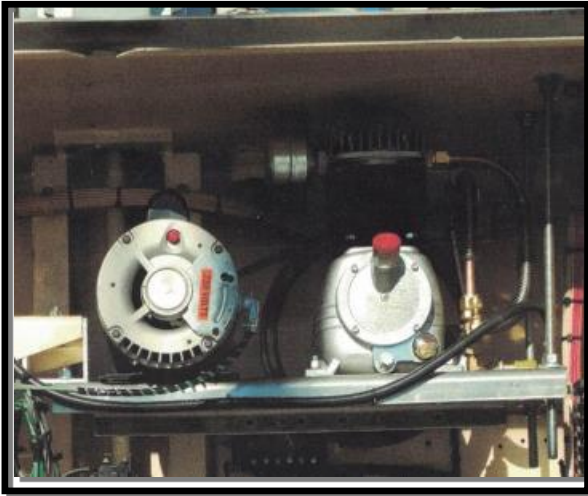
K-150-GE
With MA-13 Mech.



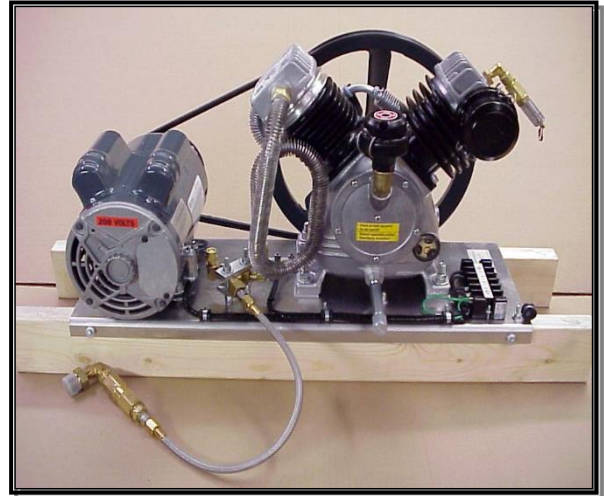
K-175-GE
With MA 18 & 19 Mech.

K-150-GE Compressor Specifications		K-175-GE Compressor Specifications	
Cylinders	1	Cylinders	2
Stages	1	Stages	2
Max. Pressure	210 PSI	Max. Pressure	500 PSI
Free Air Delivery	2.75 SCFM	Free Air Delivery	3.4 SCFM
Operating Speed	620 RPM	Operating Speed	670 RPM
Oil Capacity	1.0 quarts	Oil Capacity	2.3 quarts
Length	23.5 in.	Length	32.5 in.
Width	10 in.	Width	14 in.
Height	14 in.	Height	18 in.
Weight	68 lbs.	Weight	120 lbs.
Motor 1or 3 Phase	1 HP	Motor 1or 3 Phase	2 HP

DIRECT REPLACEMENT, HIGH QUALITY AIR COMPRESSOR PACKAGES FOR YOUR ITE OIL CIRCUIT BREAKERS



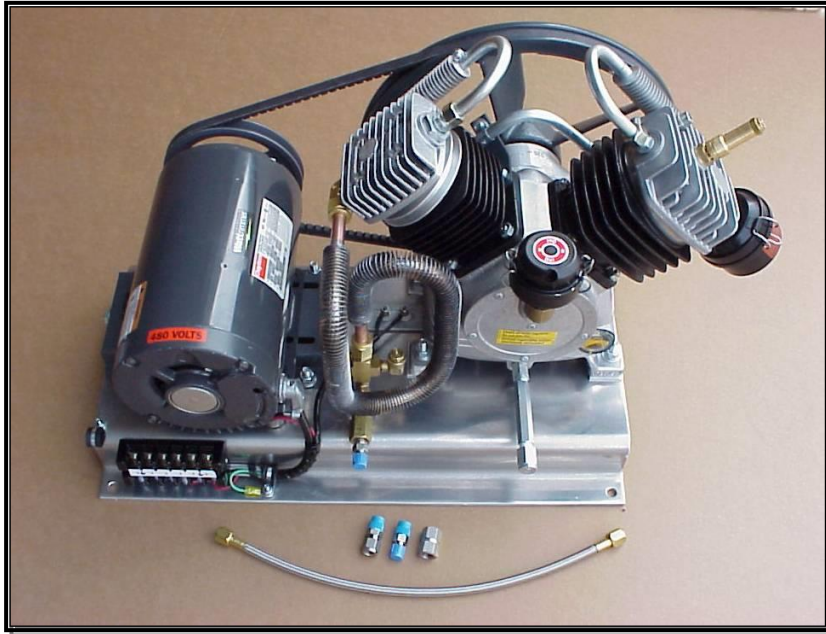
K-150-ITE-34/14KM
With P24-200 Mech.



K-175-ITE-121/169KM
With P44A/B Mech.

K-150-ITE-34/14KM Compressor Specifications		K-175-ITE-121/169KM Compressor Specifications	
Cylinders	1	Cylinders	2
Stages	1	Stages	2
Max. Pressure	210 PSI	Max. Pressure	500 PSI
Free Air Delivery	2.75 SCFM	Free Air Delivery	3.4 SCFM
Operating Speed	620 RPM	Operating Speed	670 RPM
Oil Capacity	1.0 quarts	Oil Capacity	2.3 quarts
Length	22 in.	Length	27 in.
Width	10 in.	Width	14 in.
Height	14 in.	Height	13.5 in.
Weight	68 lbs.	Weight	120 lbs.
Motor 1 or 3 Phase	1 HP	Motor 1 or 3 Phase	2 HP

REPLACEMENT, HIGH QUALITY AIR COMPRESSOR PACKAGE FOR BBC-ELF CIRCUIT BREAKER



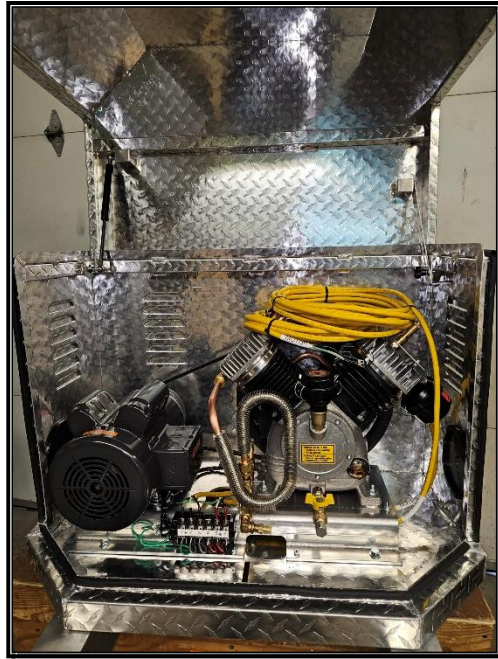
Model: K-175-HAUG

Replaces Oil Free Haug Model Box 75 Compressor

Compressor Specifications

Cylinders	2
Stages	2
Max. Pressure	500 PSI
Free Air Delivery	4 CFM
Operating Speed	760 RPM
Motor 3 Phase	3 HP
Oil Capacity	2.3 Quarts
Length Total	29 in.
Width Total	15 in.
Height Total	18 in.
Weight Total	132 lbs.
Heater	200 W, 230 VAC
Thermostat	on 50°F, off 70°F

PORTABLE LOW PRESSURE AIR COMPRESSOR PACKAGE

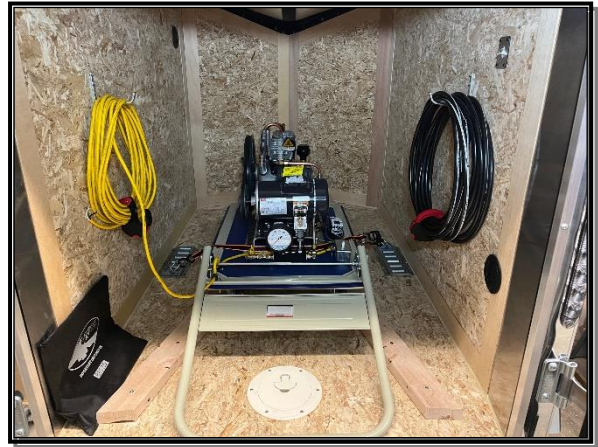


Model: K-175-PORTABLE

Easily move portable unit to any site.

Compressor Specifications	
Cylinders	2
Stages	2
Max. Pressure	500 PSI
Free Air Delivery	4 CFM
Operating Speed	760 RPM
Motor 1 or 3 Phase	2 HP
Oil Capacity	2.3 Quarts
Length Total	31.5 in.
Width Total	36 in.
Height Total	25 in.
Weight Total	lbs.
Heater	200 W, 230 VAC

LOW PRESSURE AIR COMPRESSOR TRAILER



Model: K-175-TRAILER

Transport air compressor to any site via trailer.

Compressor Specifications	
Cylinders	2
Stages	2
Max. Pressure	500 PSI
Free Air Delivery	3.4 CFM
Operating Speed	760 RPM
Motor 1 or 3 Phase	2 HP
Oil Capacity	2.3 Quarts
Length Total	31.5 in.
Width Total	36 in.
Height Total	25 in.
Weight Total	200 lbs.
Heater	200 W, 230 VAC
Trailer Specifications	
Trailer size	4'x6'
GVWR	2000 lbs
Empty Weight	610 lbs
Weight Total	885 lbs.